



Music Virtual Learning

Music Appreciation

May 21, 2020



Music Appreciation

Lesson: May 21, 2020

Objective/Learning Target:

Students will learn about musical elements that impact scary movies.



Bell Work

Watch the following clip of behind the scenes of recent scary films:



Answer the following questions:

1. What surprised you the most about how scary films are made?
2. What are five things you learned today?
3. How does this change the way you view scary films now?



Lesson

Six Techniques of Scary Movie Music

Atonal/Dissonance

Accents

Sound Effects

Leitmotifs

Silence

Long Sustained Tone

Atonal/Dissonance

Makes you feel uncomfortable and tense

Lacks a single tonal center

Musical sounds that cause clash or tension

Different than what you are used to hearing everyday



Accents

Technique used to make you jump and scream
An unexpected emphasis of a musical tone that surprises the audience.



Listen for the sudden loud note after the long sustained notes.

Sound Effects

Sounds effects are becoming part of a composer's score.
Movies employ different sound effects in order to help tell the story.
Normal vs Scary sound effects



Leitmotifs

A musical line that is used to remember a scary event or evil character.

Famous example: Jaws



Silence

An important musical technique
Helps create feelings of isolation and loneliness

Long Sustained Tone


Used to signal negative events or moods taking place.
Heard in all registers from high to low.
Not just used in horror films.





Movie Examples

Psycho

- ❑ 1960 American horror-thriller film
- ❑ Director: Alfred Hitchcock
 - ❑ Nominated for 4 Oscars
- ❑ Composer: Bernard Herrman
- ❑ Music written for a string orchestra instead of full orchestra
- ❑ Low budget film
- ❑ Main title theme comes back three times on the soundtrack.
- ❑ Ostinato
- ❑ Music for the shower scene [Listen Here](#) 
- ❑ One of the most famous cue in film music.



Stephen King

One of the best authors of horror novels and stories
Best novel: The Shining

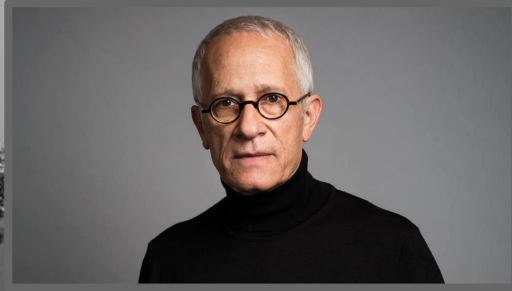


The Shining



- ❑ Director Stanley Kubrick
- ❑ Good use of dissonant/atonal music
- ❑ Kubrick is known for using pre-existing classical music in the films.
- ❑ “Polymorphia” by Krzysztof Penderecki

James Newton Howard



- ❑ Born in LA, 1951
- ❑ Musical Family
- ❑ Beethoven was a big influence, as well as the Beatles.
- ❑ Pretty Woman- First big music career
- ❑ Other movies: Remake of King Kong, The Dreamcatcher, Signs

I am Legend

- ❑ Director: Francis Lawrence
- ❑ Premiered: 2007
- ❑ Based on a 1954 Science fiction Novel by Richard Matheson
- ❑ Sci-fi thriller about a biological war that left Robert Neville as the last healthy living human on earth. However, he is surrounded other vampire-like humans and are hungry for Neville's blood.



I am Legend Soundtrack

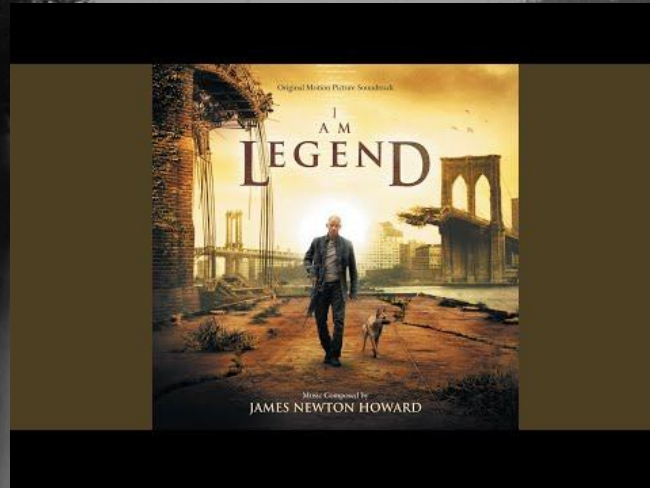
- ❑ Composer: James Newton Howard
- ❑ Performed by the Hollywood Studio Symphony and the Hollywood Film Chorale.
- ❑ Known for the balance between sound effects and silence.
- ❑ Main Soundtrack: “My Name is Robert Neville”
- ❑ Sad and heroic theme
- ❑ Also used again in other parts of the movie.
- ❑ Thrilling pieces: “Darkseeker Dogs” & “The Jagged Edge”
- ❑ Low-freq. electronics, driving percussion, blaring brass, and dissonant strings.
- ❑ Bob Marley songs: Three Little Birds, Stir It up, and Redemption Song



Review

Listen to this soundtrack:

What scary movie music techniques do you hear?





Additional Resources



Check out this websites

https://www.premiumbeat.com/blog/cinematography-tips-for-horror-filmmakers
/

<https://www.musical-u.com/learn/7-strange-musical-secrets-for-making-your-own-scary-soundtrack/>